



GAT MONTHLY MEMBERSHIP PROGRESS REPORT

Results as of: 4/30/2026

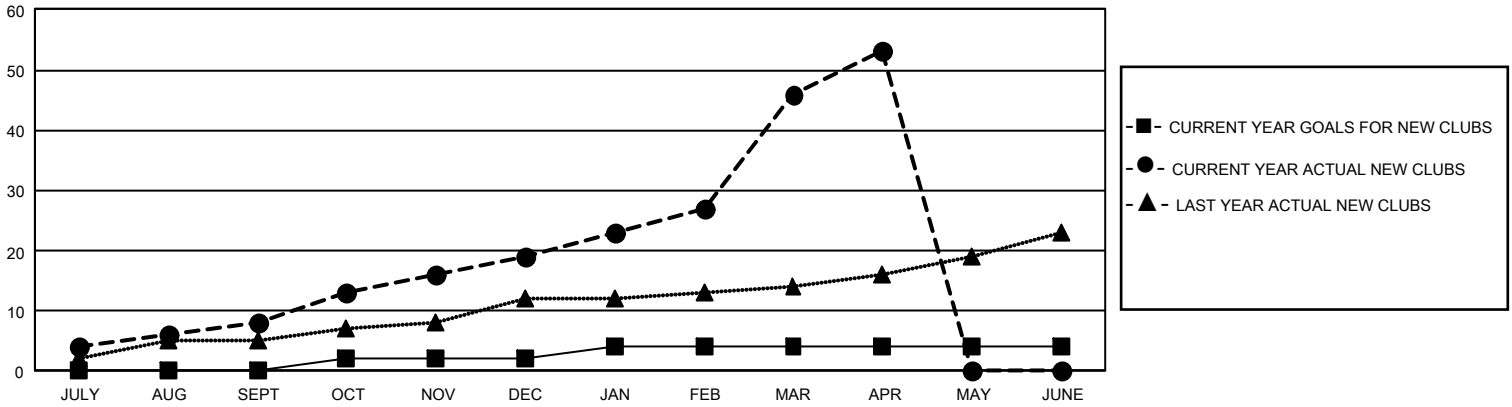
GMT Constitutional Area 6 - S, Group B

REPORT DOES NOT INCLUDE CLUBS IN UNDISTRICTED AREAS.

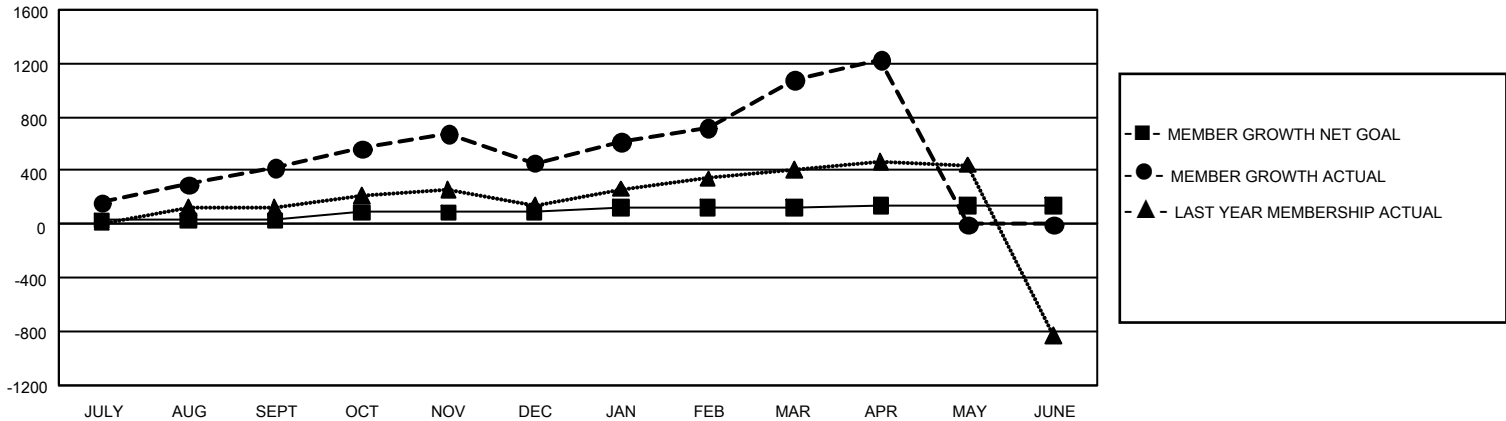
| Clubs | | | |
|-----------------------|---------------|-----------|---------------|
| RESULTS FOR 2025-2026 | | | |
| QUARTER | NEW CLUB GOAL | NEW CLUBS | DROPPED CLUBS |
| JULY/AUG/SEPT | 0 | 8 | 3 |
| OCT/NOV/DEC | 6 | 11 | 9 |
| JAN/FEB/MAR | 6 | 27 | 4 |
| APR/MAY/JUNE | 0 | 7 | 1 |

| Members | | | |
|-----------------------|------------------------|----------------------|--|
| RESULTS FOR 2025-2026 | | | |
| QUARTER | MEMBER GROWTH NET GOAL | MEMBER GROWTH ACTUAL | DROPPED MEMBERS ACTUAL (including transfers) |
| JULY/AUG/SEPT | 30 | 599 | 132 |
| OCT/NOV/DEC | 60 | 531 | 450 |
| JAN/FEB/MAR | 35 | 1,044 | 230 |
| APR/MAY/JUNE | 15 | 300 | 108 |

GOALS AND ACTUAL NEW CLUBS CUMULATIVE



GOALS AND ACTUAL MEMBERS CUMULATIVE



| | | | |
|--|--|--|---------------------------------------|
| DROPPED CLUBS: 17 | 254 CLUBS OF 497 ADDED 1 OR MORE NEW MEMBERS | GENDER DISTRIBUTION | |
| | | MALE 6,220 (69.92%) FEMALE 2,676 (30.08%) NON BINARY 0 (0.00%) PREFER NOT TO ANSWER 0 (0.00%) | |
| DROPPED MEMBERS | | CLICK HERE FOR CUMULATIVE MEMBERSHIP DATA | TOTAL FAMILY UNIT MEMBERS 5,148 |
| DECEASED 10 CLUB CANCELLED 223 OTHER 681 TOTAL 914 | | | FAMILY MEMBERS PAYING HALF DUES 3,796 |